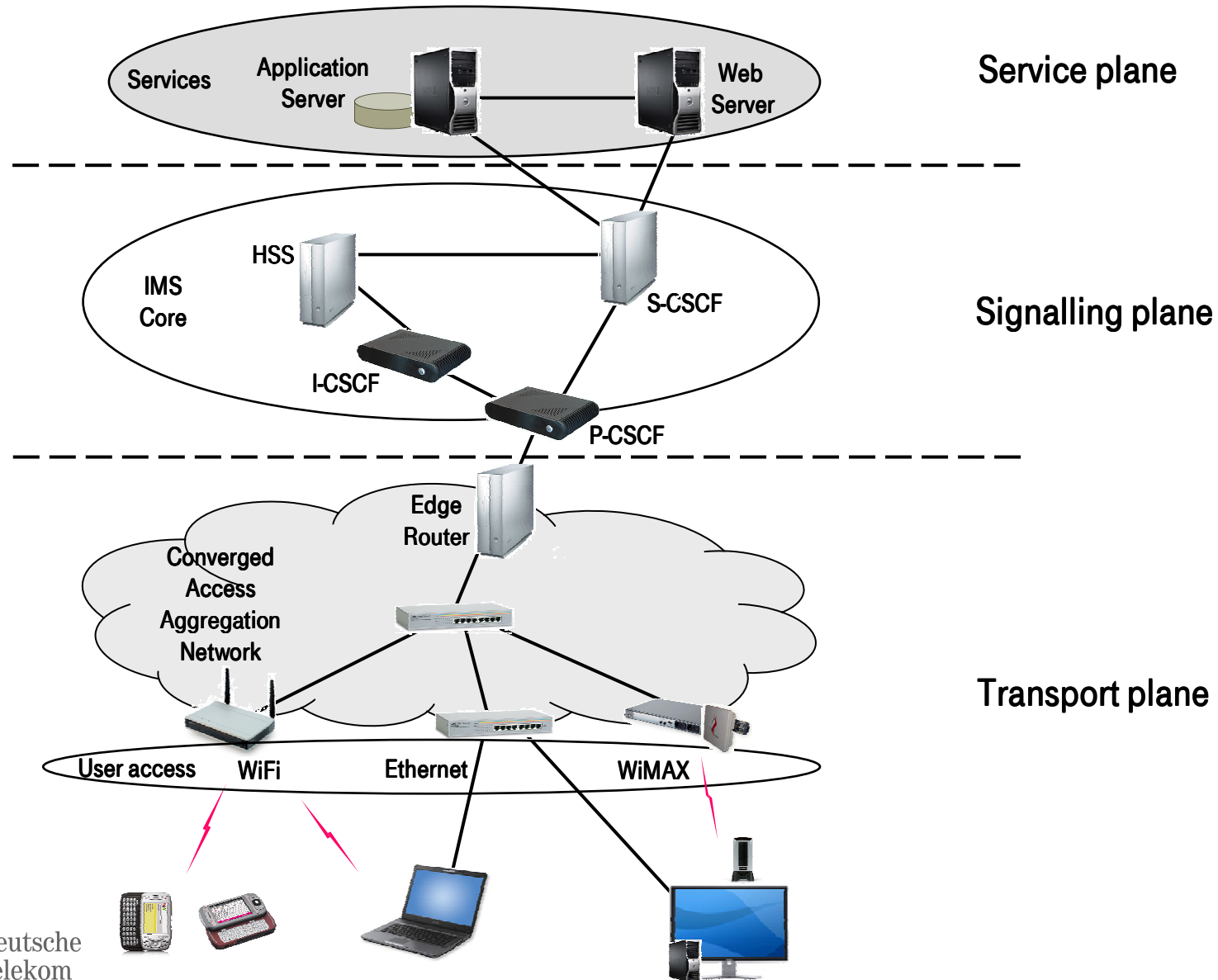
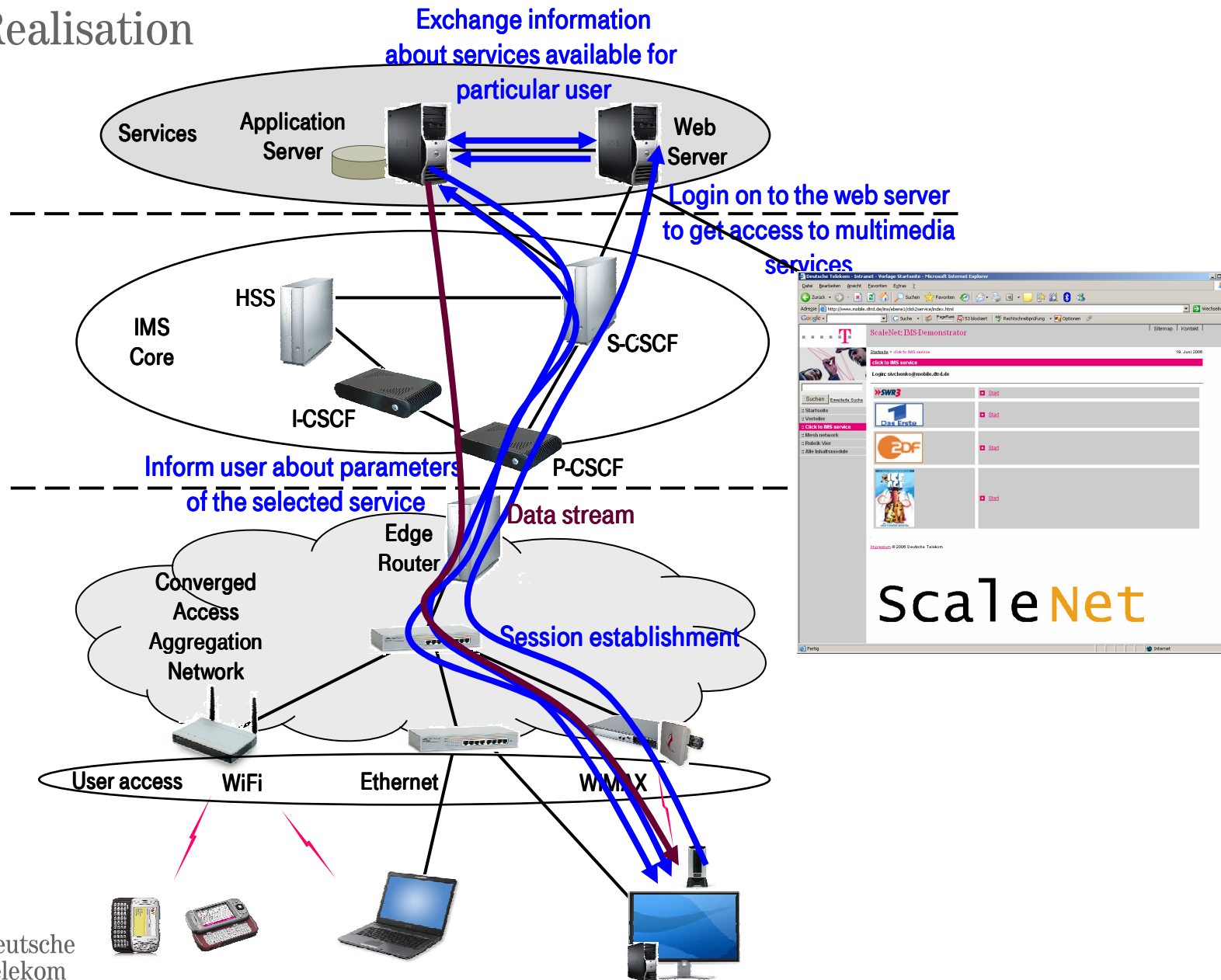


# IMS demonstration

## Setup

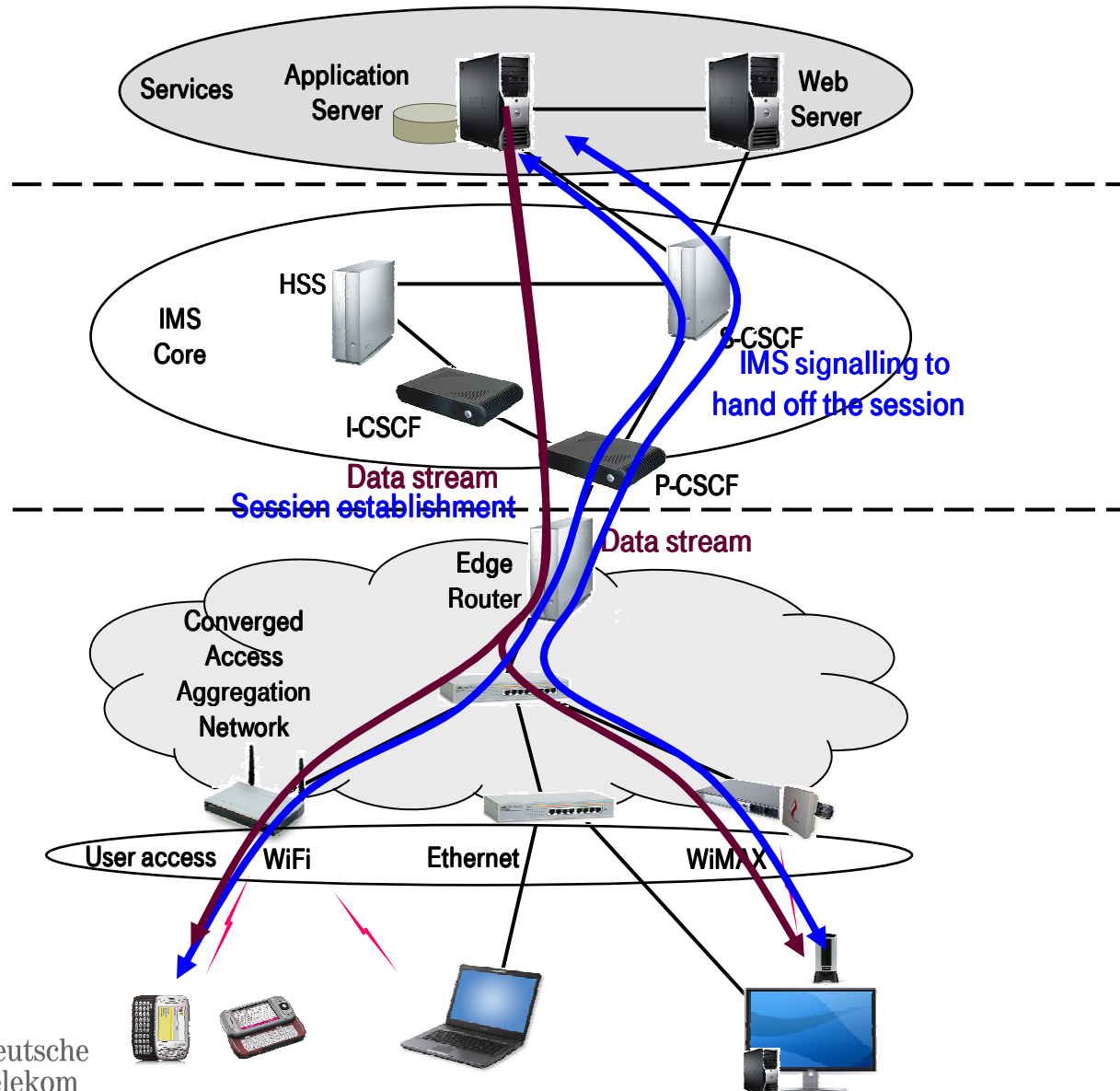


# Click to IMS service Realisation

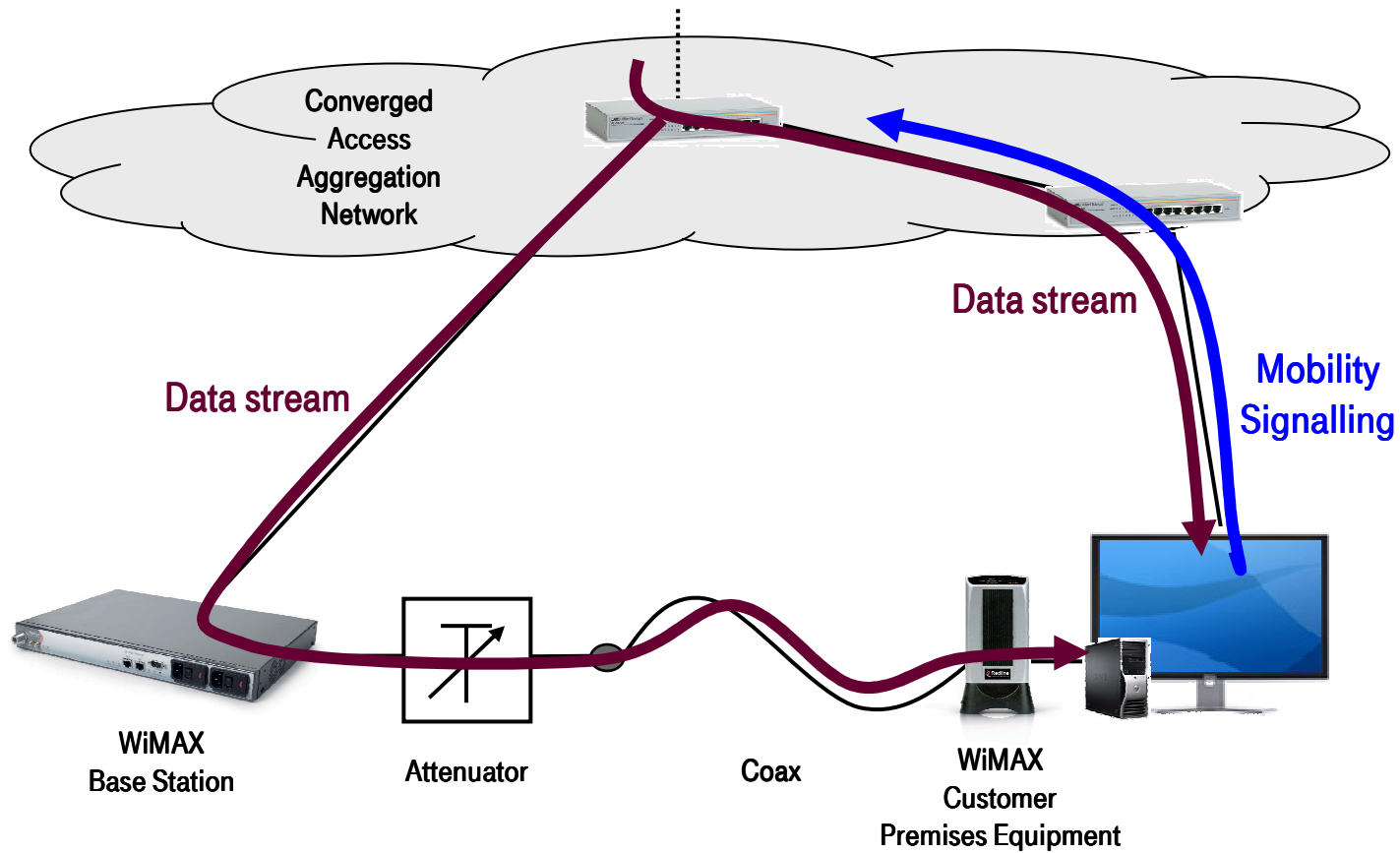


# Session mobility

## IMS controlled session handover with QoS adaptation



# L2 handover in heterogeneous environment Realisation



# Summary

## Realised services and functions

- IMS core is installed and configured to manage basic multimedia sessions
- „Click to IMS service“ provides flexible multimedia services offered by a web portal
- IMS controlled session mobility with adaptation of session parameters to the capabilities of mobile terminals
- Limitations:
  - Correspondent needs to know multiple IMS IDs of a user to communicate with him
  - Manual initiation of terminal handover
  - No session adaptation to the current network environment of the user

## Current activities

- Usage of a common IMS ID to achieve a particular user
  - Introducing different service profiles for end terminals
- Integration of an overarching IMS enabled mobility engine to control user connectivity to the network
  - Overarching QoS control
  - Interaction with service plane to adapt services to current QoS situation in the network